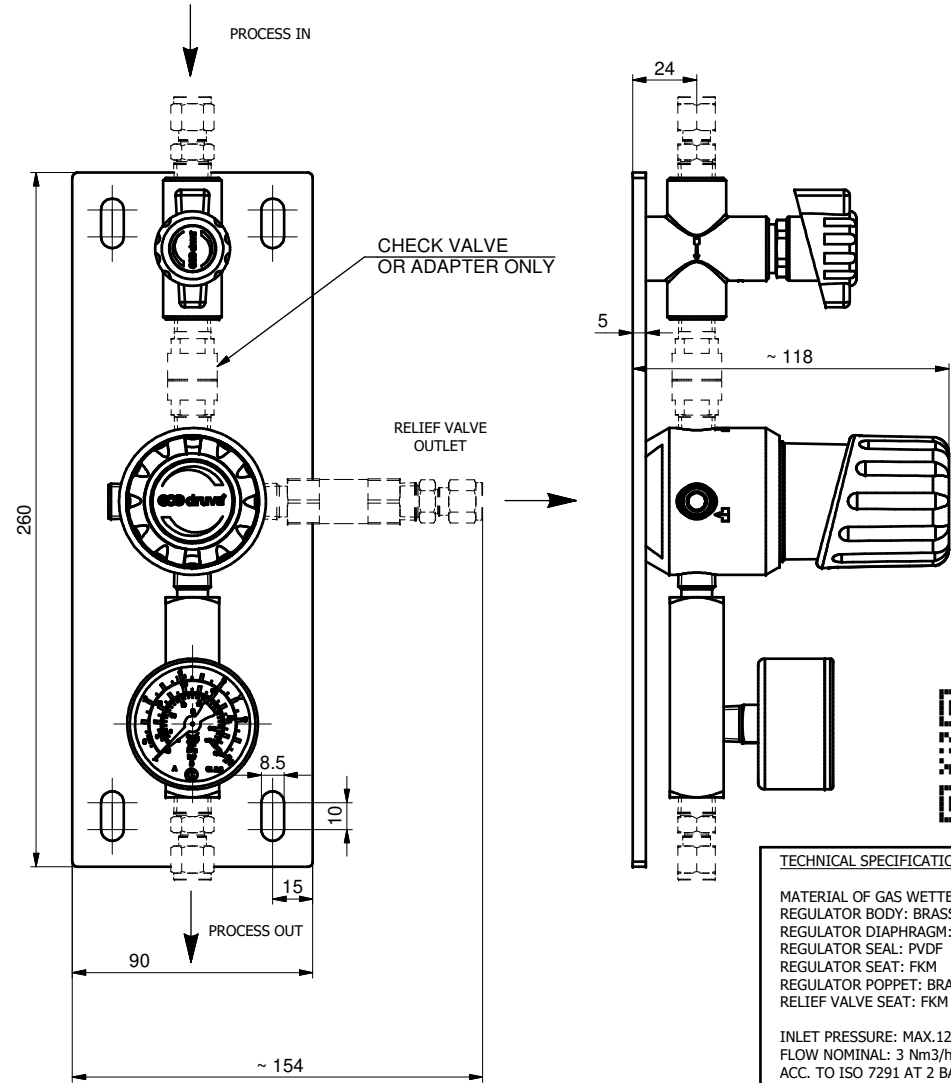
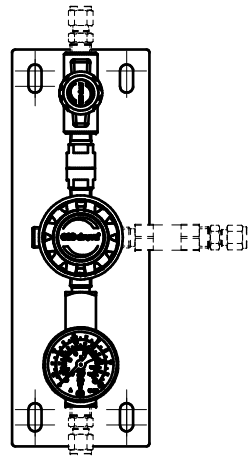
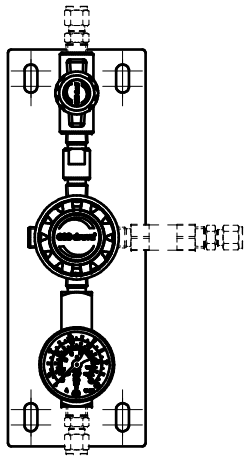


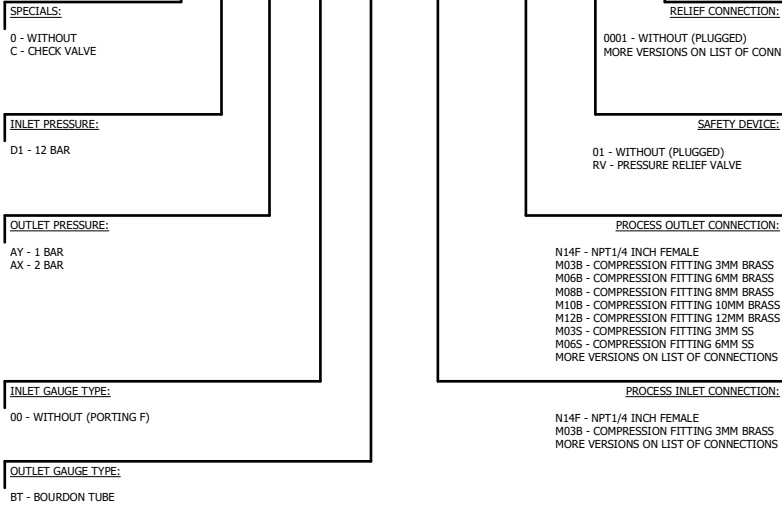
SPECIAL - 0

SPECIAL - C



**ORDERING INFORMATION**

PPLLVT X XX XX XX XX XXXX XXXX XX XXXX



**LIST OF CONNECTIONS**

- N14F - NPT1/4 INCH FEMALE
- M03B - COMPRESSION FITTING 3MM BRASS (NOT FOR RELIEF CONN.)
- M06B - COMPRESSION FITTING 6MM BRASS
- M08B - COMPRESSION FITTING 8MM BRASS
- M10B - COMPRESSION FITTING 10MM BRASS
- M12B - COMPRESSION FITTING 12MM BRASS
- M03S - COMPRESSION FITTING 3MM SS (NOT FOR RELIEF CONN.)
- M06S - COMPRESSION FITTING 6MM SS
- M08S - COMPRESSION FITTING 8MM SS
- M10S - COMPRESSION FITTING 10MM SS
- M12S - COMPRESSION FITTING 12MM SS
- DX4B - COMPRESSION FITTING 1/8" BRASS
- DX6B - COMPRESSION FITTING 3/8" BRASS
- DX8B - COMPRESSION FITTING 1/2" BRASS
- DX2S - COMPRESSION FITTING 1/8" SS
- DX4S - COMPRESSION FITTING 1/4" SS
- DX6S - COMPRESSION FITTING 3/8" SS
- DX8S - COMPRESSION FITTING 1/2" SS
- H04B - HOSE NOZ MET 4.8 MM BRASS (NOT FOR INLET AND RELIEF CONN.)
- H06B - HOSE NOZ MET 6.4 MM BRASS (NOT FOR INLET AND RELIEF CONN.)
- H08B - HOSE NOZ MET 8.0 MM BRASS (NOT FOR INLET AND RELIEF CONN.)
- H04S - HOSE NOZ MET 4.8 MM SS (NOT FOR INLET AND RELIEF CONN.)
- H06S - HOSE NOZ MET 6.4 MM SS (NOT FOR INLET AND RELIEF CONN.)
- H08S - HOSE NOZ MET 8.0 MM SS (NOT FOR INLET AND RELIEF CONN.)

AVAILABILITY OF BRASS FITTINGS DEPENDING ON PRESSURE AND SIZE.  
PAY ATTENTION TO THE MAXIMUM APPROVED PRESSURE OF YOUR PIPEWORK

HOSE NOZZLE MAX. 15 BAR

**TECHNICAL SPECIFICATION**

MATERIAL OF GAS WETTED PARTS:  
REGULATOR BODY: BRASS (CW614N)  
REGULATOR DIAPHRAGM: HASTELLOY (C276)  
REGULATOR SEAL: PVDF  
REGULATOR SEAT: FKM  
REGULATOR POPPET: BRASS (CW614N)  
RELIEF VALVE SEAT: FKM

INLET PRESSURE: MAX.12 BAR  
FLOW NOMINAL: 3 Nm3/h (N2)  
ACC. TO ISO 7291 AT 2 BAR OUT

GAS TYPE  
DEFINED BY PRODUCT LINE AND TYPE  
(CHECK APPROVED GAS TYPE IN DATASHEET)

PUR LINE:  
NON-CORROSIVE GASES  
NON-TOXIC GASES

EXAMPLE: PPLLVT0D1AX00BTM06SM06BRVM06B

Polotovár Raw material		Rozměr polotovaru Dim. of raw material		Povrchová úprava Surface finish		Hmotnost Weight	
Materiál Material		Materiál Material		Starý výkres Old drawing		List / Počet listů Sheet / Number of sheets 1 / 2	
Komentář Notice		Opracování / Machining Ra		Kritický rozměr značen Critical dimension marked		KR	
Datum vypracování Creation date		Měřítko / Scale		Netol.rozměry / Dim. without tol. ISO 2768 m,K		<b>POU PUR LINE LOW FLOW LV</b> <b>POU PUR 003Q LV</b>	
Vytvořitel Created		1:2					
Kontrola Inspected		L. Ondráček				<b>PPLLVT</b>	
Schválil Approved		Dr. Thorsten Küster					
Klasifikace Item Class		B: Standard					